



Recruitment Information

Sizewell Belts Assistant Warden



Contents

1

About us	2
Role description	4
Person Specification	5
Organisation chart	6
Key terms	7
How to apply	8



Suffolk Wildlife Trust is the county's nature charity – the only organisation dedicated wholly to safeguarding Suffolk's wildlife and countryside.

Founded in 1961 Suffolk Wildlife Trust has been leading conservation efforts in Suffolk and safeguarded some of the county's most important wildlife areas as nature reserves.

- We are supported by 27,000 members and 1,300 volunteers.
- We care for nearly 8,000 acres of Suffolk's most precious habitats in our 50 nature reserves.
- We advise planners, landowners, communities and individuals on improving land for wildlife - to create a Living Landscape that is rich in wildlife where species can move out of protected sites through networks of linked up habitat.
- All our nature reserves are free for everyone to enjoy and our 7 Wild Learning centres provide opportunities for all ages to discover, explore and learn about the natural world. Last year we led 400 school visits and ran 550 events, including activities organized by our network of volunteer-led wildlife groups. In all, more than 60,000 people were involved with a wildlife activity organised by the Trust and many more enjoyed our reserves independently.
- We have a dedicated team of 9 Trustees and more than 70 members of staff.

Suffolk Wildlife Trust is part of the Wildlife Trusts partnership – a federated charity made up from 46 individual Wildlife Trusts managing more than 2,300 nature reserves and with 850,000 members.



Suffolk Wildlife Trust is here to enable everyone to play their part in creating a wilder Suffolk

Our nature reserves are places of tranquillity and 'naturalness' where people can connect with wildlife. Our management principles reflect this, by favouring natural processes that create complex habitat mosaics and offer the best opportunities for wildlife.

Beyond our reserves, Suffolk's wildlife is under pressure from intensive agriculture, new development and coastal change. We are working with landowners to influence the management of the wider countryside for wildlife. Future predicted climate change is likely to further impact on species and habitats, so we are working to create a more resilient countryside, with better, bigger and more joined up spaces for nature to enable wildlife to adapt to these changes.

We believe life with nature is good for us all and that society will care more and do more to help if people feel connected to nature. So, through our wide-ranging learning activities and the visitor experience we create at our centres we are striving to make nature part of everyday life, for everyone.

Our values reflect this:

- We will always act in the best interests of wildlife.
- We will secure a future for wildlife in Suffolk by connecting people to nature.
- We will make a difference by inspiring and empowering local action for wildlife.
- We are a learning organisation and will embrace new ideas to achieve our vision



OFFICE BASE:

Upper Abbey Farm, Leiston

WORK HOURS:

37.5 hours per week
occasional weekends and evenings with
time off in lieu

RESPONSIBLE TO:

Sizewell Belts Warden

MAIN RESPONSIBILITIES:

Work with the Warden to ensure
the site is managed in accordance with
conservation objectives.

Support the Warden in leading
and managing volunteers.

OVERALL PURPOSE OF THE ROLE

This role is a one-year contract to support the day-to-day management of the Sizewell Belts and, where appropriate, the wider EDF estate at Sizewell. In your role you will ensure excellent standards of conservation management and visitor access are maintained. You will ensure accessibility and a welcoming atmosphere to ensure visitors have an enjoyable experience.

You will be an ambassador for Suffolk Wildlife Trust, seeking opportunities to raise awareness of the Trust's work through organized events. The nature of this role means a driving licence is essential.

Work with the Warden to ensure the areas of high biodiversity on the Sizewell Estate are managed in accordance with conservation objectives.

- Undertake habitat management activities set out in the reserve management plans as directed by the Warden.
- Undertake essential species surveys and produce reports as required for monitoring.
- Supervise volunteers and contractors as required, to support the management of the reserve.
- Responsible for the care and maintenance of all relevant machinery and equipment.
- Support the husbandry and welfare of livestock at Sizewell.

Support the Warden in leading and managing volunteers.

- Recruit, encourage and support volunteers in the management of the site.

Support the role of the site as a flagship for the Trust's work.

- Raise awareness of conservation objectives through events and guided walks.
- Work with colleagues to support learning activities on site.
- Use your skills and experience to support the Trust's overall conservation objectives.

Facilitate the enjoyment of the estate by the public.

- Maintain visitor infrastructure to the Trust's high standards.
- Lead guided walks for community groups.

Implement best practice for site management.

- Ensure Health & Safety procedures, SWT policies as well as codes of practice are communicated and adhered to by volunteers on the estate.

Be an ambassador for Suffolk Wildlife Trust across all your day-to-day activities

1. Experience and qualifications

Qualifications

Minimum – 5 GCSE'S Grades A-C (or equivalent) including English and Maths

Desirable – A' level qualifications or equivalent, Degree in Countryside Management, Ecology or related subject; or equivalent experience.

Experience

Essential

- Previous experience in a similar role
- Wide range of habitat management experience

Desirable

- Wetland and woodland management experience
- Some livestock experience
- Volunteer management (recruitment, co-ordination and supervising)

2. Knowledge

Essential

- Familiarity with Health and Safety requirements
- Good knowledge of wetland and woodland species

Desirable

- Understanding of small and large machinery

3. Skills and abilities

Essential

- Ability to work in a team
- Good inter-personal and communication skills
- Some species survey skills – particularly birds
- Well organised with ability to manage time effectively
- Full driving licence
- Comfortable preparing written reports and competent with Microsoft office

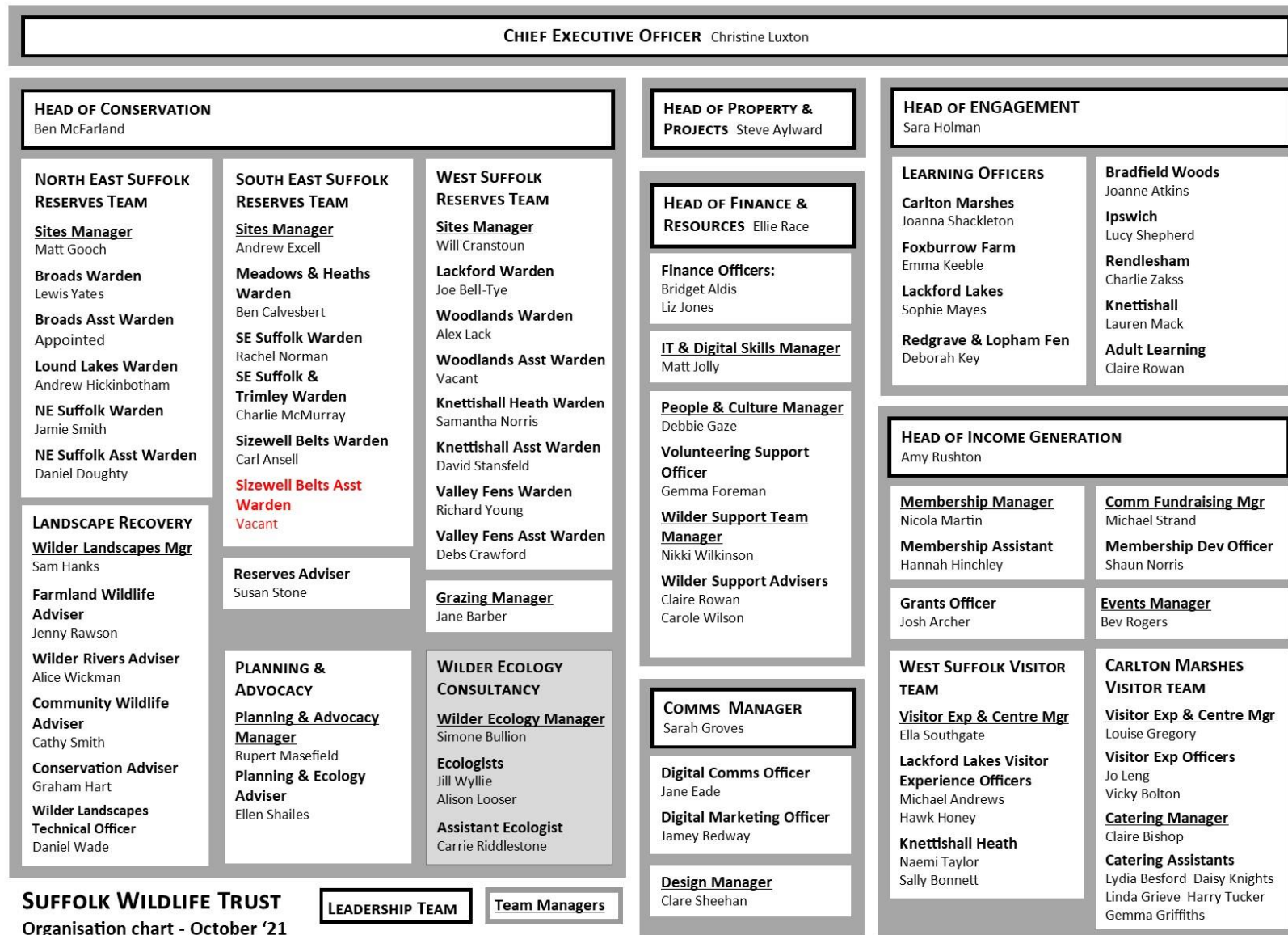
Desirable

- Pesticide use (PA1 PA6AW)
- Trailer towing B+E qualification
- Chainsaw qualification, brush cutter qualification and some tractor driving experience

4. Behaviours

Essential

- Self-motivated
- Personable, engaging demeanour
- High level of enthusiasm
- Practical approach to problems and adaptable
- High level of physical fitness
- Commitment to environmental issues



Key Terms

The role will be based at Upper Abbey Farm, Leiston.

The post is a 1-year contract with a standard working week of 37.5 hours. Some weekends and occasional evenings with time off in lieu.

A Pension scheme is available with 8% employer's contribution. Annual Leave entitlement is 20 days plus bank holidays and concessionary days

The package includes a salary of £20,000- £22,000 pa (according to level of experience)

Please email your completed job application form to:
recruitment@suffolkwildlifetrust.org

No agencies at this stage please.

Closing date: 14 October

Interviews to be held the week commencing 18 October

Suffolk Wildlife Trust is an equal opportunities employer and positively encourages applications from suitably qualified and eligible candidates regardless of sex, race, disability, age, sexual orientation, gender identity, religion or belief, marital status, or pregnancy and maternity.

Thank you for your interest in Suffolk Wildlife Trust



How to apply

8

Please use the application form to outline how your skills, knowledge and experience meet the requirements of the role, as detailed in the job description, and demonstrate the attributes highlighted in the person specification.

Email your completed application form to recruitment@suffolkwildlifetrust.org

Closing date for applications is 14th October

Interviews will take place the week commencing 18th October

No agencies please

Unfortunately due to the volume of applicants we are unable to respond individually.

Thank you for your interest in Suffolk Wildlife Trust

