



# Your local wildlife news

Woodbridge Wildlife Group is part of Suffolk Wildlife Trust's county volunteer network. Led by local Trust members, the group organises events, talks and wildlife activities and raises money for the Trust, to help safeguard our wild and beautiful county.

## OVERCOMING THE CHALLENGES OF GOING PEAT FREE FOR COMMERCIAL NURSERIES

Commercial nurseries have been wedded to growing in peat-based substrates for decades - but in the last few years there have been real steps forward in producing alternatives suitable for large-scale commercial production. We rely on uniformity and consistency in our growing media, and this has been difficult for producers to scale up when working with recycled materials, where supply can be intermittent. The carrot of consumer demand, coupled with the stick of (slow) regulatory action, is now achieving results that are seeing a social shift.

At Katie's Garden we are now producing certain ranges (herbs, veg, alpines, smaller perennials) in a peat-free compost produced almost entirely from British waste products - we've been hesitant about the environmental economics of imported materials such as coir.

The rest of our production is still in a peat-reduced mix whilst we get used to working with the new materials. The main challenges are around irrigation (less water-holding capacity than peat) and nutrition (less conductivity of nutrients within the mix) but the newest products are solving this issue. We still find establishment of young seedlings can be harder than in peat, but maybe we just need to pay more frequent attention!

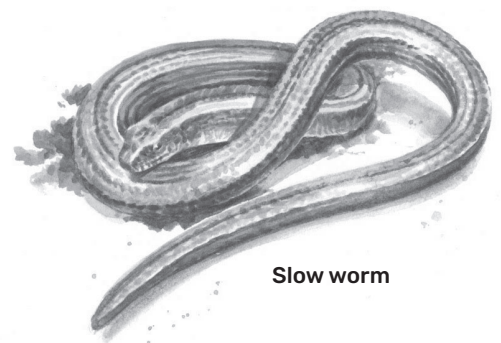
We're fully behind the Wildlife Trust's national campaign to protect our precious peatlands and by all of us asking for change, we can continue to find better alternatives and solutions to ensure their survival whilst keeping us growing the plants we love for wildlife in our homes and communities.

**Susie from Katie's Garden**

## LEADING THE WAY GOING PEAT FREE

It is wonderful that Katie's Garden are offering peat free plants now. As Suffolk Wildlife Trust members, we can also lead the way, by purchasing peat free compost and, even better, making our own. The traditional compost heap doubles up as a valuable habitat for grass snake, toad, slow worm and many insects and invertebrates. If your garden seems too small, why not consider a compost bin or investigate whether you can join with others to share a compost heap on a local allotment or other suitable location.

**Joy Shaw**



Slow worm

BILL STEVENSON



## Be part of Team Wilder

Research shows that if just one person in every four takes up a cause, this can be enough to change the minds and behaviour of the majority. Imagine what we could achieve if that cause was nature: if a quarter of people in Suffolk created more space for wildlife to bring back what we've lost.

**#Team  
Wilder**

suffolkwildlifetrust.org

## FINANCE REPORT

As we near the end of another financial year we can reflect on a twelve-month period when our local wildlife group activities have resumed and been well supported by local people. It has been another successful year for fundraising and I'm hopeful that our accounts for the year ended 31 March 2023 will show that we've supported Suffolk Wildlife Trust just short of £4,000. A really pleasing result and one I know that Suffolk Wildlife Trust will very much value. It is these unrestricted funds which are increasingly more challenging to find, that the Trust can spend on identified priorities to support Suffolk's wildlife. Thanks to everyone who has

supported us, and also to local plant centre, Katie's Garden in Newbourne, who have continued to work co-operatively and generously with us this year. We very much value everybody's contribution

**Helen Taylor, Treasurer**

## THANK YOU

to Katie's Garden for sponsoring our newsletter.



## WHAT'S ON

Friday 19 May 7pm for 7.30pm

### Walk: EVENING NIGHTINGALE WALK

Park and start from Melton Riverside Car Park at 7pm, Wilford Bridge Road, Melton IP12 1LR. Booking required by visiting [suffolkwildlifetrust.org/events](http://suffolkwildlifetrust.org/events)

Friday 23 June 9:15pm

### Event: EVENING NIGHTJARS AND GLOW WORMS

Meet at Sandgalls Car Park, Tunstall (TM 382 559). Booking required.

Saturday 15 July 2pm

### Walk: BUTTERFLIES IN BONNY WOOD

Meet and park at Barking Tye Village Hall car park IP6 8HP. Booking required.

Saturday 26 August 10am

### Walk: WOODBIDGE TO MARTLESHAM CREEK AND RETURN

Meet and park at the public car park behind Woodbridge Community Hall, IP12 4AU (charges payable). Booking required.



Speckled wood

See [suffolkwildlifetrust.org/events](http://suffolkwildlifetrust.org/events) for event details.

## NIGHT-TIME POLLINATORS

**Saturday 17 June 2023 8am**

Fen Meadow, Woodbridge IP12 4HA.

what3words location: [emails.notch.rebounds](https://www.what3words.com/location/emails.notch.rebounds)

We'll be running our popular moth event again this year, although it will be the first time we've run the event in mid-June. The hope is that we might find some of the large hawk-moths that are flying at that time of the year.

This is an ideal event for families and children, because you can get close-up to these stunning species to observe their beautiful shapes and subtle patterns – and have a go at identifying them with an expert. The event is free, with no pre-booking required – though we appreciate any donations to the Trust that visitors care to make. We start opening moth traps early in the morning, so that we release the moths in the vegetation to rest before the day gets too hot. The event is usually over before 10am, leaving plenty of time for other Saturday activities and, unusually for our events, dogs on leads are permitted.

As a bonus, Fen Meadow's famous southern marsh-orchids should be in flower too. Last year in August we found 131 moths of 57 different kinds. Who can resist creatures with names like Maiden's Blush, Rosy Footman, Orange Swift, Willow Beauty, Scorched Carpet or Uncertain?

## YOUR LOCAL WILDLIFE GROUP CONTACTS

### Chairman

Phil Smith  
01473 625630  
[swtwoodbridge@outlook.com](mailto:swtwoodbridge@outlook.com)

### Newsletter editor

Joy Shaw  
[joyshawinbox@gmail.com](mailto:joyshawinbox@gmail.com)

### VOLUNTEER WORK PARTIES

#### Blaxhall Common

Aleks Pogroszewski  
01728 582085  
[pogro57@gmail.com](mailto:pogro57@gmail.com)

### MAGAZINES

If you would like to help our magazine volunteer delivery team in the future please contact:

#### Nic Martin

Membership Manager  
01473 890089  
[membership@suffolkwildlifetrust.org](mailto:membership@suffolkwildlifetrust.org)

### WILD YOUR INBOX

Would you like to hear from us by email? Sign up at [bit.ly/SWTemails](http://bit.ly/SWTemails)

## YOUR LOCAL WARDEN



**Andrew Excell**  
South-East  
Suffolk Coast  
Sites Manager  
01394 411019

## YOUR WILD LEARNING OFFICER



**Emma Keeble**  
Wild Learning  
Officer  
01394 380113



## Your most local reserves

Blaxhall Common ● Bromeswell Green ● Captain's Wood

Hutchison's Meadow ● Martlesham Wilds ● Newbourne Springs

Trimley Marshes ● Foxburrow



**Suffolk  
Wildlife Trust**

[suffolkwildlifetrust.org](http://suffolkwildlifetrust.org)

Registered charity no 262777