



Suffolk
Wildlife Trust

Trustee

Recruitment information

Martlesham Wilds

Our spectacular new nature reserve on the banks of the river Deben, purchased in 2022

Registered charity no. 262777

Joining the Board of Trustees

Thank you for your interest in giving your time, expertise, knowledge, experience and energy to Suffolk Wildlife Trust as a Trustee.

We aim for a confident, diverse Board and our focus for 2024 is recruiting Trustees with good all round Board skills, including candidates with the potential to be a future Chair.

Suffolk Wildlife Trust is an inspiring and impactful organisation with a compelling vision for our county:

**A Wilder Suffolk
where nature is thriving and abundant,
because everyone is doing more to help.**

This is an exciting time to be joining Suffolk Wildlife Trust as a Trustee, but equally a time of challenge for nature and society.

This is a critical decade for nature in Suffolk. We have huge ambition to grow our impact. Please help us succeed, both for nature and for our communities.



James Alexander, Chair



About Suffolk Wildlife Trust

A photograph of two women in a wooden observation tower. The woman on the left is wearing a dark floral patterned jacket and is looking through binoculars. The woman on the right is wearing a pink cardigan over a patterned top and sunglasses, with her arms crossed. The tower is made of light-colored wood and has a curved roof. The background is a lush green forest.

Lackford Lakes

The visitor centre at Lackford Lakes is the Trust's 'gateway to nature' in West Suffolk

About Suffolk Wildlife Trust

Suffolk Wildlife Trust is the county's nature charity

Since the Trust was founded in 1961, we have been leading conservation efforts in Suffolk and have safeguarded some of the county's most important wildlife areas as nature reserves.

As a grass-roots organisation, we aim to deliver our vision to 'Bring Nature Back' by inspiring people and empowering communities to care and to act for nature – as well as managing our 51 nature reserves and advocating for wildlife.

We are championing two collective targets in Suffolk that everyone in society can help to achieve:

- To protect and restore 30% of Suffolk's land and sea for nature recovery
- To inspire and support 1 in 4 people in Suffolk to take action for nature and climate

Through our work with businesses, community groups, conservation charities and the public we want to increase our impact by inspiring and mobilising everyone to play their part.

Our farmland team works with landowners and managers to deliver habitat management, enhancement and creation across Suffolk, enabling networks of landowners to support nature's recovery, at scale.



About Suffolk Wildlife Trust

We want the world of nature to be a place for everyone - and for our activities and how we operate to reflect this.

Our nature reserves are free for everyone to enjoy, with our visitor centres at Carlton Marshes and Lackford Lakes offering facilities that help to remove barriers to participation and opportunities for everyone to discover, explore and learn about the natural world.

Each year more than 60,000 people are involved with a wildlife activity organised by Suffolk Wildlife Trust and many more enjoy our nature reserves independently.

Our members and volunteers are drawn from the communities we serve and we want to represent our whole county. As we look to 2030 and shift our focus to becoming a movement for nature's recovery, we will be increasing our investment in community enabling and working with communities we have not previously reached.

We want everyone to feel included and to join us in our mission to bring nature back to Suffolk. In particular we want to break down barriers to participation. By this we mean equal and fair access for everyone, regardless of age, sex, disability, race, sexual orientation, gender identity, faith, class or income.

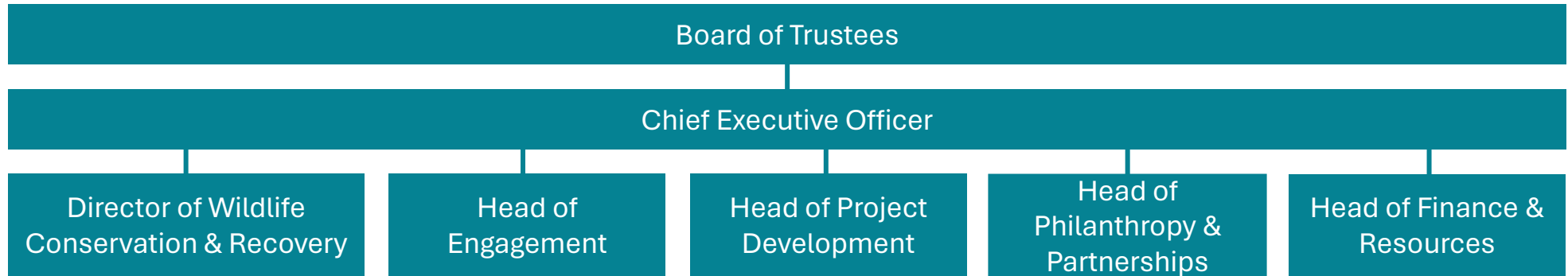


Carlton Marshes
The gateway to the Suffolk Broads

About Suffolk Wildlife Trust

Suffolk Wildlife Trust is an organisation that makes a difference. We employ over 90 people and are supported by 1,300 volunteers and 28,000 members.

Our Leadership Team of five department heads support the Chief Executive who is responsible for the operations of the Trust and who, in turn, reports to the Board of Trustees:



Our Leadership Team take responsibility for the delivery of our 2030 strategy:

- Goal 1: **Nature is recovering at scale, in wildlife-rich landscapes & seas**
- Goal 2: **Nature and climate are part of everyday life & decision making**
- Goal 3: **The charity is stronger, more resilient & a more effective champion for nature**

Suffolk Wildlife Trust is part of The Wildlife Trusts – a UK federation of 46 local Wildlife Trusts that together has a powerful collective voice with over 850,000 members and caring for more than 2,300 nature reserves.

About the role

A scenic view of a marshland area. In the foreground, there are dense green plants with small white flowers. A narrow waterway winds through the middle ground, reflecting the blue sky. The background consists of a wide, flat green field stretching to a line of trees under a bright blue sky with a few white clouds.

Worlingham Marshes

Our ambitious nature reserve purchase, creating more habitat connectivity along the Waveney valley

About the role

We aim for a confident, diverse Board and place value on both professional and lived experiences.

This year we are looking to recruit several new Trustees.

MAIN DUTIES & RESPONSIBILITIES:

Collectively as a member of the Board, and individually, the role of a Trustee is to have oversight of the Trust and to take responsibility for making sure it is doing what it was set up to do.

Key responsibilities include:

- Setting the direction of the Trust through the 2030 strategy.
- Providing leadership and strategic direction for the Trust, including agreeing appropriate policies and scrutinising performance against agreed goals.
- Championing Suffolk Wildlife Trust and its values, fostering an innovative culture where risks are appropriately managed.
- Ensuring the Trust complies with its governing document, charity and company law and any other relevant legislation or regulations.
- Ensuring the Trust uses its resources effectively and efficiently to deliver its vision and mission.
- Appointing the Chief Executive Officer and monitoring their performance.



Black Bourn Valley

A n exciting wildlife-rich landscape is emerging by 'letting nature take the lead'

Commitment required

As a Trustee your energy, passion and enthusiasm for Suffolk's wildlife will bring drive and focus to our work.

All Trustees are expected to make the following commitments:

- Attend eight Board meetings per year, plus an Away Day and AGM
- Chair or attend additional committees or groups as required
- Prepare for each meeting by reading the agenda and papers to enable you to participate fully in discussion and decision-making.
- Be an advocate for Suffolk Wildlife Trust at events and functions.

It is a requirement of our Articles that Trustees are members of Suffolk Wildlife Trust during their term.

- Trustees are elected for a three-year term at our November AGM.
- Trustees may serve a maximum of two terms.

This is a voluntary role and reasonable travel expenses can be reimbursed.

- To support the effective functioning of the Board, three meetings are held by video call and the remaining five at locations across Suffolk. This gives the Board the opportunity to visit reserves and projects and to meet staff.



Skills & attributes we are looking for

In 2024 we are looking for Trustees with all round Board skills, including some with potential to be a future Chair.

	ESSENTIAL	DESIRABLE
Strong commitment to the Trust's vision for a Wilder Suffolk and an understanding of the challenges and opportunities to implement it	✓	
Understanding of the role and responsibilities of a Board Member for a charity	✓	
The ability to think strategically and creatively and to challenge proposals with clear logical thinking	✓	
Commitment to embedding equality, diversity and inclusion across the Trust's operations	✓	
Understanding of finance and cash management to support effective oversight of financial decisions by the Board		✓
Understanding of charity governance, regulation to support effective oversight of governance by the Board and collective decision making		✓
Understanding of risk management and monitoring to support effective control of risk by the Board		✓



What to expect from us

Our Board is united in their commitment to our cause and work together through consensus decision making to achieve more for nature.

You will be assigned a 'buddy' as part of your individual Trustee induction plan. This will be an experienced member of the Board who you will be able to use to ask for advice and assistance on all aspects of being a Board member for Suffolk Wildlife Trust.

If you feel that you do not quite have all the knowledge, skills and experience listed here, but are still interested in the role and can make a useful contribution to Suffolk Wildlife Trust and help us reach a wider audience, we encourage you to contact us to discuss the opportunity.



Next steps

Thank you for your interest in Suffolk Wildlife Trust.

Your application should consist of a summary of relevant experience (e.g. CV) and a covering letter addressing the following points:

1. Why you would like to join the Board of Suffolk Wildlife Trust and the personal attributes you will bring.
2. An outline of the experience, knowledge and skills you would bring to the Board. We value lived experiences as well as professional qualifications.

We welcome conversations with potential Trustees prior to applying. Please email recruitment@suffolkwildlifetrust.org to arrange this.

- Closing date for applications: **9th June 2024**
- Please email your application to: recruitment@suffolkwildlifetrust.org
- Preferred candidates will be invited to meet members of the Board for an interview and discussion about the role on **Monday 8th or Tuesday 9th July**. Please indicate your availability when you apply.

Please note:

- The role is subject to eligibility checks required by the Charity Commission.
- As part of our commitment to safeguarding, Suffolk Wildlife Trust operates a safer recruitment process.





**Suffolk
Wildlife Trust**



**Together, we can create a
wilder Suffolk for everyone**

Registered charity no. 262777

