



**Suffolk**  
Wildlife Trust

# Assistant Farm Wildlife Adviser Worlingham Project



# The Opportunity

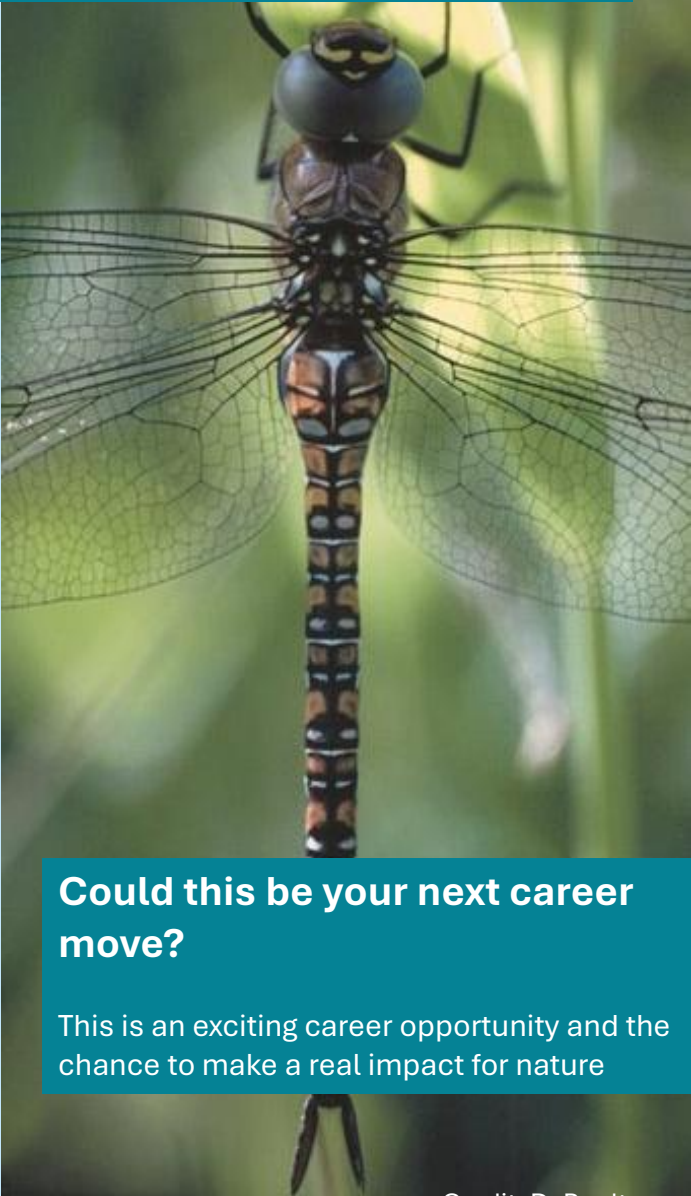
2

**This assistant role within Suffolk Wildlife Trust's Farm Wildlife Advice Team, which forms part of the wider Wilder Landscapes Team, supports the delivery of wildlife advice and habitat improvement across Suffolk's farmers and landowners, helping the Trust achieve its vision for a Wilder Suffolk and strategic goals of 30% of our county to be connected and well looked after for nature by 2030.**

Working under the guidance of the Wilder Landscapes Advice Manager and alongside experienced Farm Wildlife Advisers, you will contribute to habitat creation and management projects, assist with the delivery of agri-environment schemes and other funded work, and support the development of landscape-scale conservation initiatives. You will also help to build and maintain relationships with farmers and landowners, contribute to community engagement through events and communications, and play an active role in promoting wildlife-friendly farming practices across the county.

This is a learning and development opportunity, offering a chance to gain expertise in farm wildlife, habitat management and wider ecology, while supporting one of Suffolk's leading nature conservation organisations.

This is a fantastic opportunity to get involved with a local wildlife trust and do amazing things for wildlife.



**Could this be your next career move?**

This is an exciting career opportunity and the chance to make a real impact for nature

Credit: D. Boulton





**Marsh Harrier**



# About Suffolk Wildlife Trust

4

**Suffolk Wildlife Trust is the county's nature charity – protecting and restoring Suffolk's wildlife.**

Since the Trust was founded in 1961, we have been leading conservation efforts in Suffolk and have safeguarded some of the county's most important wildlife areas as nature reserves.

As a grass-roots organisation, we aim to deliver our ambitious mission to '**Bringing Nature Back**' by inspiring people and empowering communities to care and to act for nature, as well as managing our 50 nature reserves, two visitor centers and advocating for wildlife.

In the decade to 2030, we are committed to scaling up our conservation and engagement activities across the county. Our aim is for 30% of our county to be connected and well looked after for nature by 2030, so that our species and habitats can recover and thrive – and for 1 in 4 people to be actively helping to achieve this.



## Our Vision

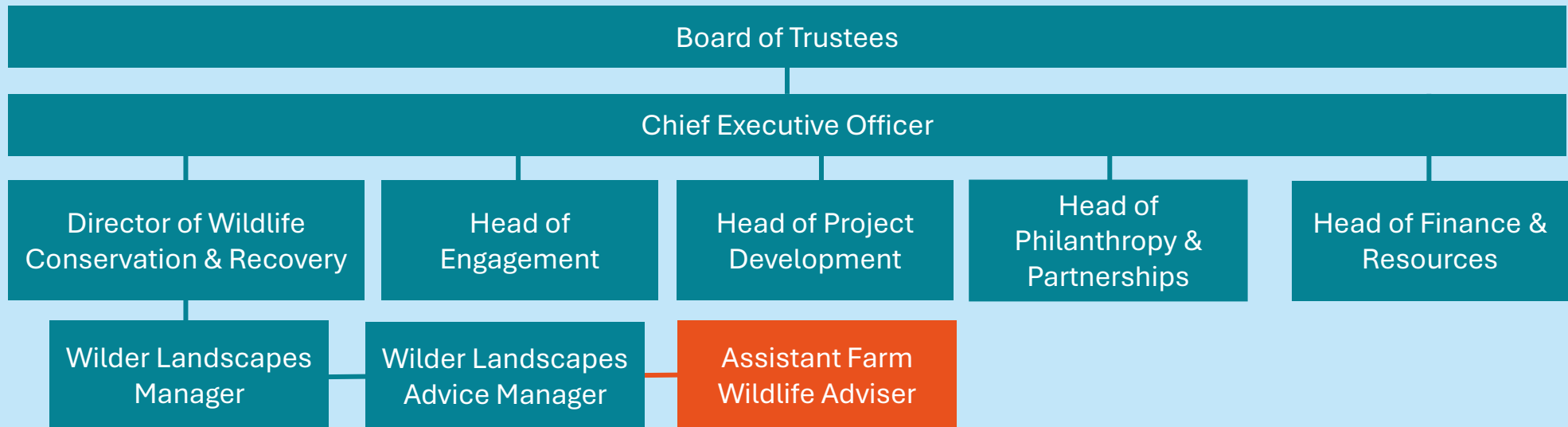
A Wilder Suffolk where nature is thriving & abundant, because everyone is doing more to help.

# About Suffolk Wildlife Trust

5

## Suffolk Wildlife Trust is an organisation that makes a difference

We are a registered charity with a Board of Trustees, 100 members of staff, 1,300 volunteers and 28,000 members. The Trust is part of The Wildlife Trusts – a UK federation of 46 local Wildlife Trusts through the UK that together has a powerful collective voice with over 850,000 members and caring for more than 2,300 nature reserves. Suffolk Wildlife Trust have five departments, each with a senior leader or ‘Head of’ responsible for a key area of activity and a team of Managers who bring operational leadership to their area of activity.



## Our culture matters to us and enables us to achieve more for wildlife

Suffolk Wildlife Trust is a gutsy organisation. We are driven by our shared values for nature & support each other to be the best we can. We constantly strive to communicate & collaborate brilliantly, representing the wildlife trust in a welcoming, professional & well-informed manner.





**Every staff role has three key areas of focus that directly support our mission to bring nature back.** Typically, you should expect to spend 80% of your time on:

## **1. Assist Farm Advice Team to provide expert wildlife advice to Farmers and Land Managers**

- Utilise your skills and experience to assist with the delivery of wildlife advice to farmers in Suffolk.
- Assist with farmers and landowners to inspire them to take action to help Suffolk's wildlife either through existing or recommended management or via wilding approaches. With support from the Farm Advice Team provide informal habitat management advice through site visits, reports, signposting.
- Assist with supporting farmer and landowner clusters.
- Develop expertise in specialist areas of farming, farm wildlife as part of your professional development, to benefit your work and strengthen the team overall.
- Report successes internally to colleagues.



**Dormouse**

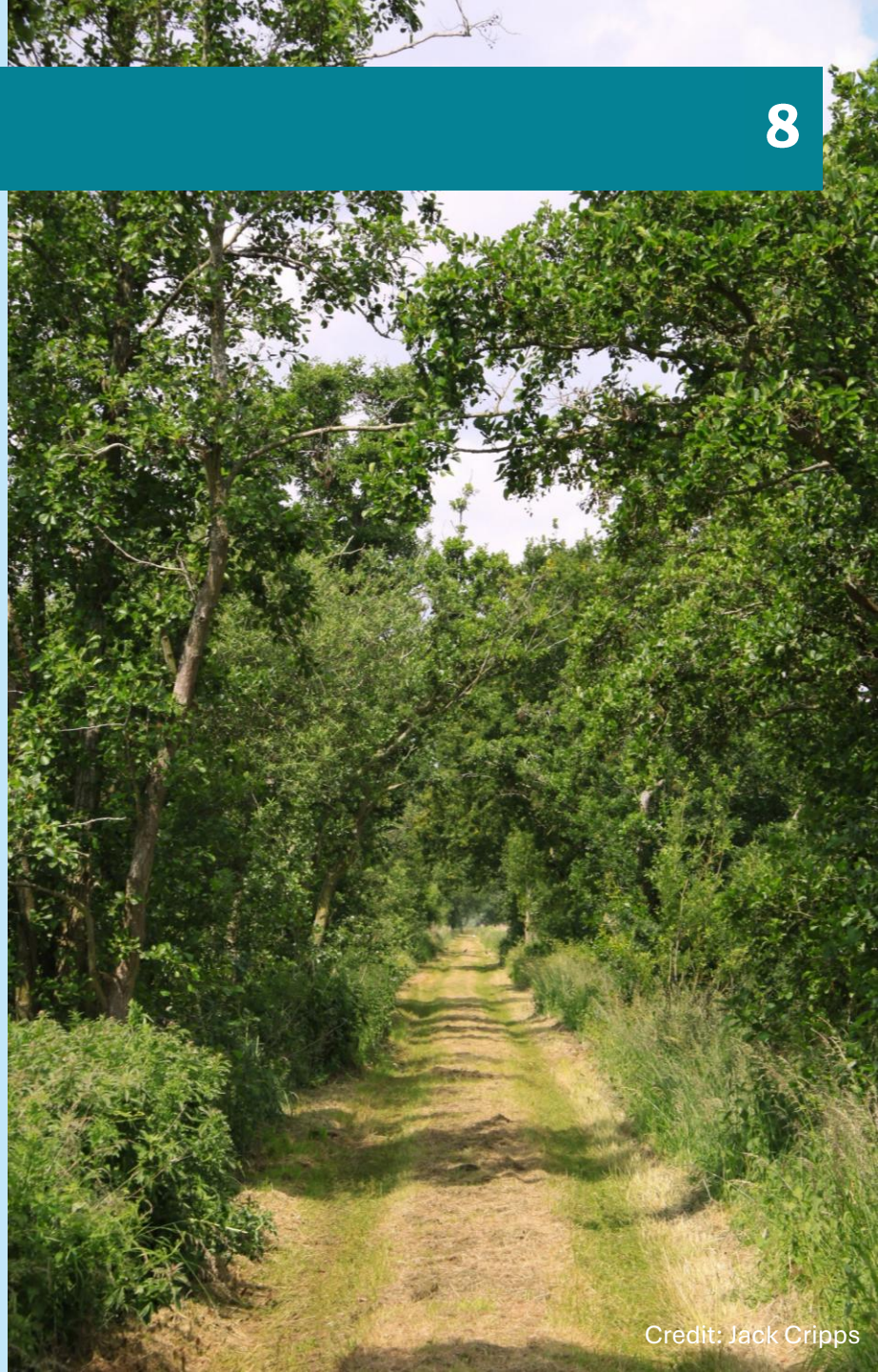


## **2. Assist Farm Advice Team with delivery of funded projects on habitat enhancement and creation that deliver strategic objectives.**

- Including agri-environment schemes, other government grants, and private investment opportunities.
- Delivering investment in biodiversity on farmland to support our priority species and habitats, at the direction of the Wilder Landscapes Advice Manager, alongside Farm Wildlife Advisers.
- Assist Farm Advisers in developing and delivering agri-environment scheme advice, including supporting scoping, application development and delivery under supervision.

## **3. Expand influence on wildlife friendly farming to a wider audience of landowners, farmers stakeholders and public across Suffolk**

- Assist with organisation and delivery of Farm Wildlife Advice team events for farmers and landowners, to widen our audience across Suffolk farmers and landowners and build our position as leading experts in the county.
- Assist with reporting successes externally to the wider public through events, articles, social media and meetings
- Represent the Trust at external stakeholder meetings.
- Be an ambassador for Suffolk Wildlife Trust.





## Our Culture

**Our organisational culture matters to us and enables us to achieve more for wildlife.**

Your role description explains the three key areas of focus of your role. What is equally important is how you do it. Suffolk Wildlife Trust is a gutsy organisation - we show courage, determination and spirit, learning from experience and embracing new ideas.

We are driven by our shared beliefs, values, passion for nature and supporting each other – staff and volunteers - to be the best we can to deliver for nature.

We strive to communicate and collaborate brilliantly, representing Suffolk Wildlife Trust in a friendly, professional and well-informed manner.

## Supporting Colleagues

This is a cross-team role, providing support to colleagues and our wonderful volunteers through the systems and processes you manage, and your can-do attitude and approach.

### Our Beliefs

Everything we do, and how we do it, reflects our belief in nature:

**Nature has value in its own right**

**The world of nature is a place for everyone**

**People will care more and do more to help if they feel connected to nature.**

**Everyone will benefit from the environmental, social and economic benefits the natural world brings to society.**

### Our Culture

Our culture is how we work together, to empower each other, and our county, to achieve more for nature:

**We Support each other**

**People flourish**

**Agility and innovation drive success**

**Collaboration strengthens our impact**

**Everyone plays their part**

**Inclusively thrives**







	Essential	Desirable
A personal commitment to Suffolk Wildlife Trust's mission to bring nature back	✓	
Commitment to environmental issues and a passion for wildlife.	✓	
Working knowledge of species or groups of conservation priority.	✓	
Strong organisational, administrative & IT skills (Microsoft 365 environment including Teams & SharePoint).	✓	
Good interpersonal, communication and networking skills.	✓	
Practical approach to problem solving.	✓	
Personable, professional and engaging demeanour with the public and Trust staff & volunteers.	✓	
Ability to engage, influence and talk to different types of people and groups.	✓	
A self-starter, with an ability to work independently effectively.	✓	
Full UK driving license.	✓	
A willingness to learn.	✓	
Understanding of agri-environment schemes.		✓



## Terms and Conditions

The role is a 12-month fixed-term position funded by Heritage Lottery Fund as part of Suffolk Wildlife Trust's Worlingham Marshes Project.

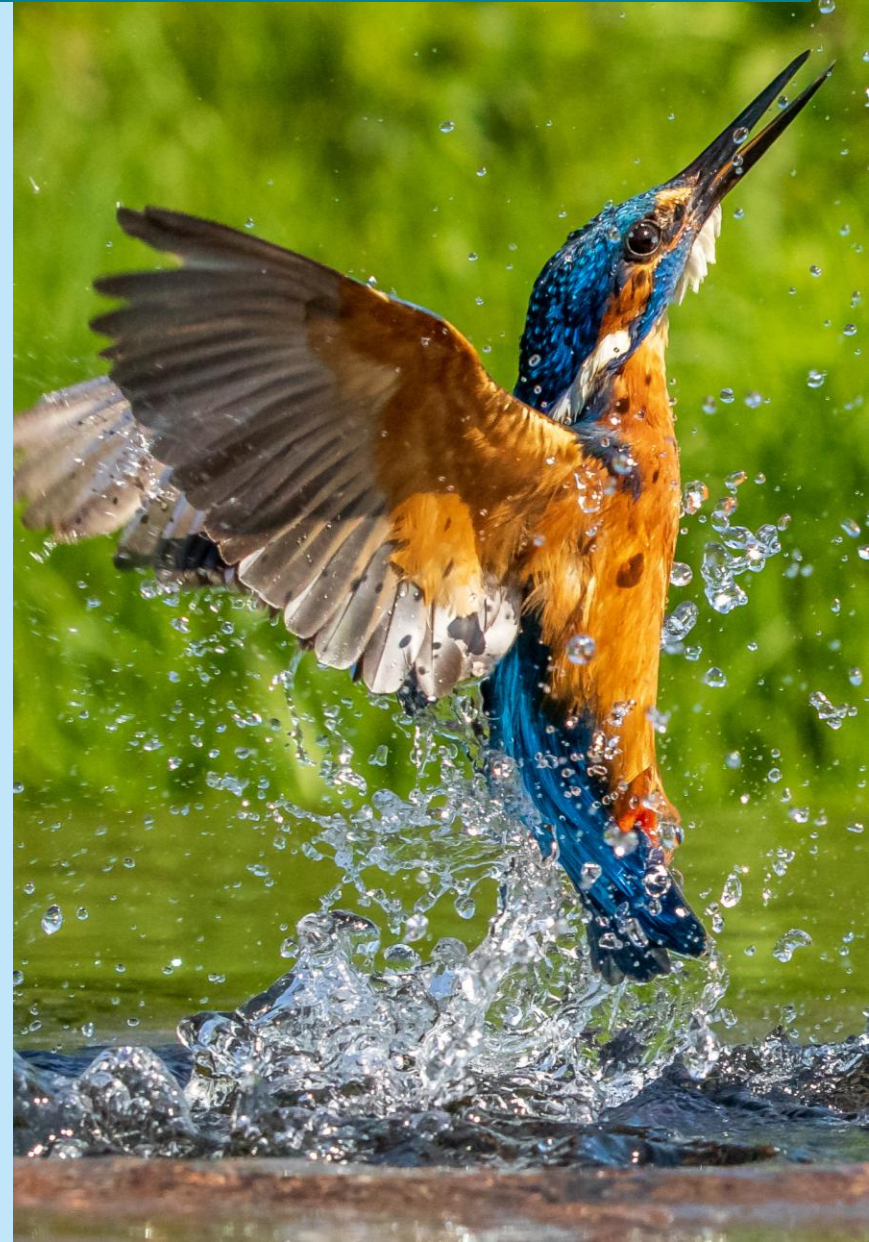
The hours of work are 22.5 hours per week (we can be flexible on days and hours) based at our Head Office Brooke House in Ashbocking. The starting salary will be £14,286.00 per annum (FTE £23,810.00).

## Employee Benefits

Annual leave entitlement starts at 33 days per annum (including Bank Holidays), increasing annually to 38 days plus employees receive an extra day off for their birthday.

We offer a 9% employer pension contribution with no employee contribution required, free 24-hour Employee Assistance Programme, free life insurance from day one of employment, free access to a private GP for themselves and their household and discounts at high street retailers. Staff can also enjoy a 10% discount in our visitor centre cafes, including retail plus public engagement staff receive logo clothing.

As part of our team, you'll join a passionate organisation dedicated to enhancing the natural world, with opportunities to work across some of the most beautiful locations in the county.



# How to apply

13

To apply for this opportunity, please submit an application via our website by 9:00am on Monday 30 June 2025. The application process will include uploading a CV and optional cover letter.

The interviews are planned for Monday 14 July 2025 at our Head Office Brooke House in Ashbocking. Please indicate on the application your availability for interview (between 9:30am and 4:00pm).

If you would like an informal discussion about the role, you can email me on [jenny.rawson@suffolkwildlifetrust.org](mailto:jenny.rawson@suffolkwildlifetrust.org).

Thank you for your interest in bringing your talents, experience and skills to Suffolk Wildlife Trust. I look forward to receiving your application.

Jenny Rawson  
**Wilder Landscapes Advice Manager**







**Suffolk**  
Wildlife Trust



**Together, we can create a  
wilder Suffolk for everyone**

Registered charity no. 262777