



Suffolk
Wildlife Trust

Pond & Great Crested Newt Surveyor

Casual Worker Contract



Credit: Eleanor Church

The Opportunity

Suffolk Wildlife Trust is seeking an suitably-skilled Pond & Great Crested Newt Surveyor to monitor newly created or restored ponds for great crested newts across Suffolk.

The post holder will travel to multiple rural farm sites each day carrying out eDNA water sampling & pond surveys that help us understand how wildlife is responding to habitat improvements. The information you collect will directly support Suffolk Wildlife Trust's work, enabling us to share meaningful insights with landowners & partners and strengthen future conservation efforts.

You'll work closely with our Farm Advice Team and a network of volunteer surveyors, helping to coordinate surveys and ensure clear communication throughout the survey season (April to June).

Safety is central to the role: you'll always work in pairs with a volunteer or member of staff & receive full training in health and safety procedures and eDNA surveying techniques before heading out into the field. A typical day runs from 9am–5pm (including travel), visiting around six ponds, which may involve long walks over uneven or muddy farmland while carrying equipment. At the end of each day, you'll be responsible for returning equipment and samples safely to Brooke House.



Warden

This opportunity may suit someone who has a keen interest in developing their surveying skills and knowledge of ponds & great crested newts. It is important the successful person is confident working with stakeholders (volunteers & landowners) and comfortable in remote countryside settings.

Strong organisation, practical problem-solving and the ability to navigate sites using maps and mobile apps are essential, as is a full driving licence. Survey experience and a basic knowledge of UK pond wildlife is advantageous.



Water Vole



Marsh Harrier

About Suffolk Wildlife Trust

Suffolk Wildlife Trust is the county's nature charity, protecting and restoring Suffolk's wildlife.

Founded in 1961, we have led conservation efforts across Suffolk for more than 60 years, safeguarding some of the county's most important wildlife areas as nature reserves.

Our Mission: Brining Nature Back to Suffolk

Our Vision: A wilder Suffolk, where nature is thriving and abundant, because everyone is united in valuing nature and doing more to help.

As a grassroots organisation, we deliver our ambitious work by inspiring people & empowering communities to care for, and act for, nature. Alongside this, we manage 50+ nature reserves & two visitor centres (Carlton Marshes & Lackford Lakes) and we advocate for wildlife across the county.

In the decade to 2030, we are committed to scaling up our work across the county. Our aim is for 30% of Suffolk to be connected and well looked after for nature by 2030, so that species and habitats can recover and thrive, and for 1 in 4 people to be actively helping to achieve this.



Cuckoo

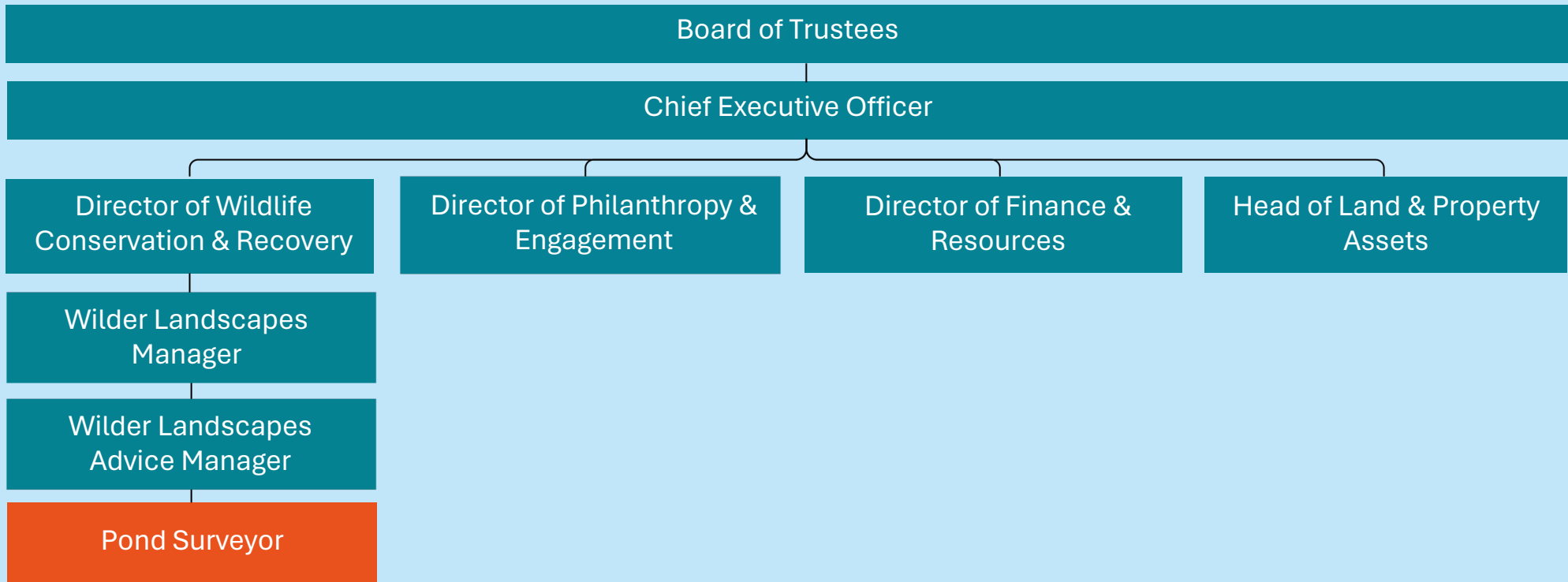
Suffolk Wildlife Trust is an organisation that makes a difference.



We are a registered charity with a Board of Trustees, 1,300 volunteers & 28,000 members. We are part of The Wildlife Trusts – a UK federation of 46 local Wildlife Trusts through the UK that together has a powerful collective voice with over 850,000 members & caring for more than 2,300 nature reserves.



We employ around 100 staff across 15 departments, organised within three main directorates. Each directorate is led by a Director and each department has an Operational Lead who provides leadership for a key function of activity.





Our Beliefs, Values & Culture

At Suffolk Wildlife Trust, our organisational culture matters to us. It enables us to achieve more for wildlife and it shapes how we work together every day. Your job description explains the key areas of focus for your role. What is equally important is how you do it. We are a gutsy organisation - we show courage, determination & spirit - learning from experience & embracing new ideas. We are driven by our shared beliefs, organisational values & passion to achieve more for nature and by supporting each other - staff & volunteers - to be the best we can to deliver for nature.

Our Beliefs Anchor Us

Everything we do, and how we do it, is anchored in our fundamental belief in the natural world.

We believe:

Nature has value in its own right.

We all share a responsibility for nature.

Society thrives when nature thrives.

Our Values Guide Us

Our values guide how we operate and the decisions we make, so we can achieve more for nature:

Tenacity: We lead by example and are gutsy in our ambition for nature and in how we use our voice.

Inclusion: We value and respect diverse voices & thinking to advocate and act for nature.

Pragmatism: We are impact-led in the methods, solutions and partnerships we choose to drive nature's recovery.

Our Culture Empowers Us

Our culture is how we work together, supporting each other, and empowering our county, to achieve more for nature:

Nature-led: We are driven by a shared passion for nature and support each other to be the best we can.

Collaborative: We communicate and collaborate brilliantly to amplify our impact and celebrate each other's achievements.

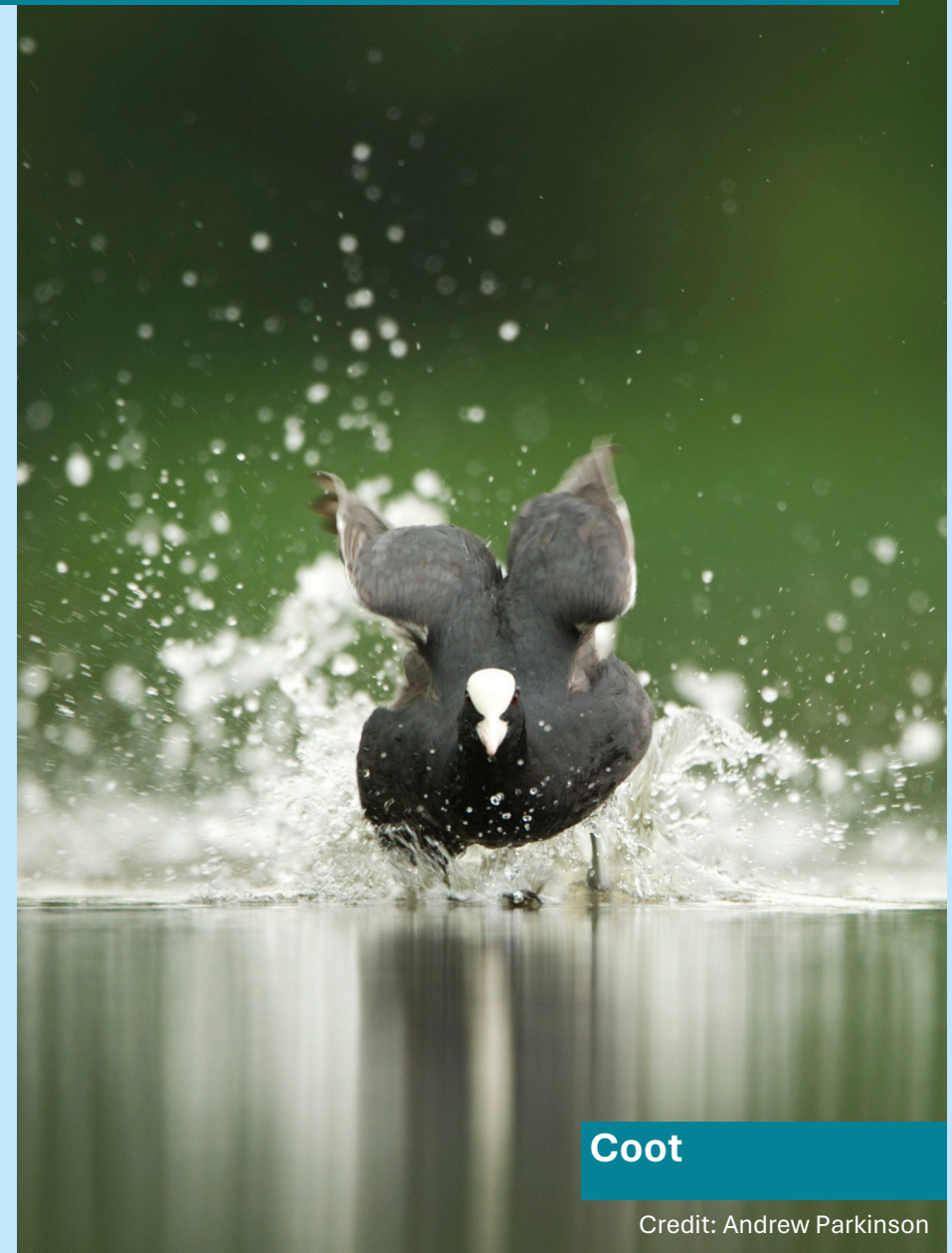
Trusting: Our staff and volunteers are trusted and accountable to deliver our ambition for nature.

Reflective: We are evidence-led, we challenge ourselves, and we embrace new ideas and learn from experience.

Safe: We always work safely and responsibly.

Role Description

- Work alongside the Suffolk Wildlife Trust Farm Advice Team and volunteer surveyors to ensure effective communication and coordination.
- Conduct field visits with volunteer surveyors to approximately six ponds each day for the collection of water samples used in great crested newt eDNA testing.
- Participate in essential training sessions, including health and safety protocols and eDNA surveying techniques.
- Prioritise safety by working in pairs for all tasks, with a dedicated volunteer accompanying you on every survey.
- Navigate to multiple farm survey sites across Suffolk, which may be located in remote or rural areas.
- Manage a typical survey day from 9 am to 5 pm, inclusive of travel time, with potential long walks across uneven farmland.
- Ensure the safe transportation of equipment & collected samples back to Brooke House at the end of each survey day.
- Receive provided health and safety equipment and training to maintain a secure working environment.



Coot

Credit: Andrew Parkinson

Person Specification

	Essential
A personal commitment to Suffolk Wildlife Trust's mission to bring back nature.	<input checked="" type="checkbox"/>
Approachable, adaptable and respectful.	<input checked="" type="checkbox"/>
Capable of coordinating & supervising volunteers and interacting with landowners.	<input checked="" type="checkbox"/>
Organised and skilled in problem-solving, with the ability to plan site visits and navigate farms using maps.	<input checked="" type="checkbox"/>
Confident IT skills & in using phone apps to submit survey data.	<input checked="" type="checkbox"/>
Able to walk long distances across sometimes uneven, muddy farmland while carrying equipment.	<input checked="" type="checkbox"/>
Familiar with working in rural settings, including knowledge of the countryside code and the ability to identify hazards and avoid risks on farms.	<input checked="" type="checkbox"/>
Work comfortably in remote areas where facilities may be limited.	<input checked="" type="checkbox"/>
Hold a full UK Driving Licence and access to a vehicle (a pool car may be available to use).	<input checked="" type="checkbox"/>
Survey experience	
Basic knowledge of UK pond wildlife.	



Credit: Eleanor Church

Terms & Conditions

The role is on a casual worker contract based at Brooke House in Ashbocking, near Ipswich. Available hours offered (expected to be roughly three days a week) will be between 9:00am to 5:00pm, Monday to Friday.

Under a casual worker agreement there are no set hours of work. Hours worked the rate of pay will be £15.00 per hour plus holiday pay paid monthly based on hours worked.

As part of our team, you'll join a passionate organisation dedicated to enhancing the natural world, with opportunities to work across some of the most beautiful locations in the county.



Kingfisher

How to Apply

To apply for this opportunity, please submit an application via our website by 9:00am on Thursday 26 February 2026.

The interviews are planned for Thursday 05 March 2026 at Brooke House. Please indicate on the application your availability for interview (between 9:30am and 4:00pm).

If you would like an informal discussion about the role, you can email me on jenny.rawson@suffolkwildlifetrust.org.

Thank you for your interest in bringing your talents, experience and skills to Suffolk Wildlife Trust. I look forward to receiving your application.

Jenny Rawson
Wilder Landscapes Advice Manager



Dragonfly



Suffolk
Wildlife Trust



**Together, we can create a
wilder Suffolk for everyone**

Registered charity no. 262777