



Suffolk
Wildlife Trust

Beaver Project Coordinator

Eastern Region Beaver Advisory Group



The Beaver Project Coordinator Opportunity

As a Beaver Project Coordinator, you will play a pivotal role in driving forward beaver reintroduction and ecological restoration across Norfolk, Suffolk and Essex. Employed by Suffolk Wildlife Trust (and based at Brooke House in Ashbocking), you will work under the direction of the Head of Wilder Landscapes and collaborate closely with the Eastern Region Beaver Advisory Group (ERBAG). A key focus of the role is identifying and progressing suitable locations for beaver reintroduction. Using tools such as Natural England's beaver impact mapping, you will assess catchments with the greatest likelihood of success and engage landowners, community groups and local partners to build support. Acting as a diplomatic and organised facilitator, you will help develop relationships, address concerns and promote understanding of the ecological benefits of beavers, helping to move early discussions into viable project opportunities.

You will also take an active role in developing Expressions of Interest (EOIs) for wild release. Working with project teams on the ground, you will provide ecological guidance, support stakeholder engagement and contribute to the drafting and submission of EOIs, with the aim of progressing strong proposals in each county. Following submission, you will continue to support these projects, helping them respond to feedback, identify funding opportunities and move towards implementation.



Alongside this, you will contribute to longer-term project success by strengthening collaboration through ERBAG. This includes helping establish effective working and management groups, ensuring projects are well-governed and resilient beyond the initial licence phase and supporting the long-term acceptance of beavers in the landscape. You will monitor activity and outcomes, report progress to key stakeholders, communicate success stories and support wider fundraising efforts.

To succeed in this role, it is essential that you have strong knowledge of beaver ecology, combined with excellent communication, stakeholder engagement and project management skills. You will be a confident and diplomatic professional, able to build trust with a wide range of partners and navigate complex interests. Strong organisational and numerical skills will support effective project delivery, alongside experience of working collaboratively across public, private and voluntary sectors. A relevant qualification or equivalent experience, a commitment to the aims of Suffolk Wildlife Trust and ERBAG together with the motivation & enthusiasm to contribute to a wilder future will be key to thriving in this role.

This is a fantastic and unique opportunity for a suitably qualified individual to help shape the future of nature recovery across East Anglia, working alongside Suffolk Wildlife Trust and neighbouring Wildlife Trusts to lead the planning, delivery and coordination of beaver reintroduction.





About Suffolk Wildlife Trust

Suffolk Wildlife Trust is the county's nature charity, protecting and restoring Suffolk's wildlife.

Founded in 1961, we have led conservation efforts across Suffolk for more than 60 years, safeguarding some of the county's most important wildlife areas as nature reserves.

Our Mission: Bringing Nature Back to Suffolk

Our Vision: A wilder Suffolk, where nature is thriving and abundant, because everyone is united in valuing nature and doing more to help.

As a grassroots organisation, we deliver our ambitious work by inspiring people & empowering communities to care for, and act for, nature. Alongside this, we manage 50+ nature reserves & two visitor centres (Carlton Marshes & Lackford Lakes) and we advocate for wildlife across the county.

In the decade to 2030, we are committed to scaling up our work across the county. Our aim is for 30% of Suffolk to be connected and well looked after for nature by 2030, so that species and habitats can recover and thrive, and for 1 in 4 people to be actively helping to achieve this.



Cuckoo

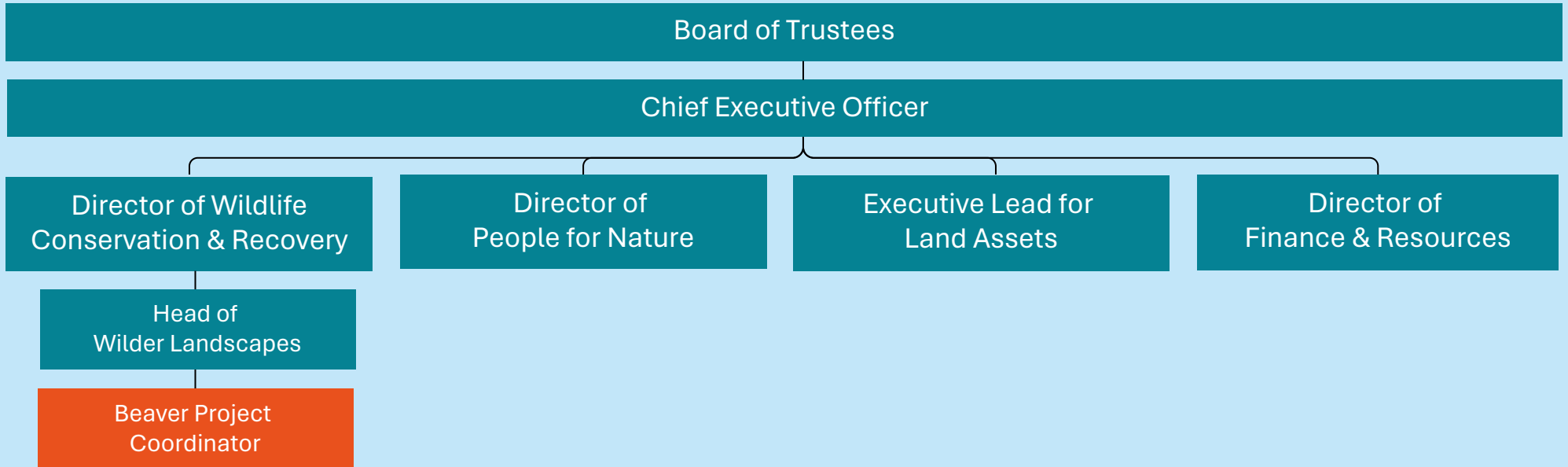
Suffolk Wildlife Trust is an organisation that makes a difference.



We are a registered charity with a Board of Trustees, 1,300 volunteers & 28,000 members. We are part of The Wildlife Trusts – a UK federation of 46 local Wildlife Trusts through the UK that together has a powerful collective voice with over 850,000 members & caring for more than 2,300 nature reserves.



We employ around 100 staff across 15 departments, organised within three main directorates. Each directorate is led by a Director, and each department has an Operational Lead who provides leadership for a key area of activity.





Suffolk Wildlife Trust



Our Beliefs, Values & Culture

At Suffolk Wildlife Trust, our organisational culture matters to us. It enables us to achieve more for wildlife and it shapes how we work together every day. Your job description explains the three key areas of focus for your role. What is equally important is how you do it. We are a gutsy organisation - we show courage, determination & spirit - learning from experience & embracing new ideas. We are driven by our shared beliefs, organisational values & passion to achieve more for nature and by supporting each other - staff & volunteers - to be the best we can to deliver for nature.

Our Beliefs Anchor Us

Everything we do, and how we do it, is anchored in our fundamental belief in the natural world.

We believe:

Nature has value in its own right.

We all share a responsibility for nature.

Society thrives when nature thrives.

Our Values Guide Us

Our values guide how we operate and the decisions we make, so we can achieve more for nature:

Tenacity: We lead by example and are gutsy in our ambition for nature and in how we use our voice.

Inclusion: We value and respect diverse voices & thinking to advocate and act for nature.

Pragmatism: We are impact-led in the methods, solutions and partnerships we choose to drive nature's recovery.

Our Culture Empowers Us

Our culture is how we work together, supporting each other, and empowering our county, to achieve more for nature:

Nature-led: We are driven by a shared passion for nature and support each other to be the best we can.

Collaborative: We communicate and collaborate brilliantly to amplify our impact and celebrate each other's achievements.

Trusting: Our staff and volunteers are trusted and accountable to deliver our ambition for nature.

Reflective: We are evidence-led, we challenge ourselves, and we embrace new ideas and learn from experience.

Safe: We always work safely and responsibly.

Role Description

Every role has three key areas of focus known as the “Power of 3” to support our mission, vision & strategic goals. Typically, you should expect to spend 80% of your time on the following:

1. Identify and engage with key catchments in the region where wild release beavers are most likely to succeed.

- Utilise NE’s beaver impact mapping to identify and explore locations in the three counties that are most likely to support beaver release.
- Engage with existing initiatives in identified key locations to progress conversations around beaver wild release. With the support of ERBAG partners, develop these conversations in areas where the strategic importance is agreed.
- Take the most well-developed prospects forward for further development.
- Utilise the network facilitated through the ERBAG, to engage with and encourage projects, educate others and dispel myths about beavers.



2. Develop wild release EOI's

- Working with the best and most likely to succeed projects on the ground, support their project team(s) with ecological expertise, appropriate engagement approaches and/or direct drafting and submission of EOI's for wild release.
- Aim to support at least one EOI in each county, if suitable progress is made in developing the prospects in each case.
- Following submission and feedback, engage and support the projects on the ground towards the next steps in their beaver wild release journey, including seeking funding support.

3. Work with groups on the ground and ERBAG to set them up for long term success and self-reliance.

- Support the positive direction of travel of the ERBAG and assist in delivering its ambitions. Ensure the interactions between Advisory, Working and Management groups established through the EOI process are embedded and understood to facilitate success.
- Where sufficient progress is made, working through the ERBAG, support projects post EOI to establish robust working and management groups, that survive the initial 10-year wild release licence phase, and support long term acceptance of beavers in the landscape.
- Use your skills and experience to contribute holistically to the Wildlife Trust's vision for a Wilder future.
- Track activity and report successes to the Head of Wilder Landscapes & the ERBAG steering group.
- Highlight key stories and good news items to the wider public through a range of media.
- Seek and secure further funding for beaver release support in the region.



Person Specification

Essential

- Use your skills and experience to contribute holistically to the Wildlife Trust's vision for a Wilder future.
- Excellent verbal & written communication and public speaking skills.
- Confident numeracy skills & able to understand, interpret and present project budget information.
- A diplomatic in approach to the requirements of stakeholders.
- Committed to the work of Suffolk Wildlife Trust and the aims of the ERBAG.
- Ability to build trust and respect with a wide variety of stakeholders and interest groups.
- Highly motivated and professional with high standards of work.
- Hold a relevant degree (or equivalent qualification) or qualified via experience.
- Excellent working knowledge of beaver ecology in the UK/Europe.
- Full UK driving license.
- Experience in managing the delivery of practical nature conservation projects in the landscape.
- Managing the delivery of projects involving a wide variety of public, private and voluntary and community sector funders and partners.
- Experience of delivering projects on time, to budget and in line with agreed outputs and outcomes.
- Experience of supporting the development of funding proposals to augment existing work programmes and implement new ones.

Desirable

- Experience of developing fundraising bids.
- Experience in the development and delivery of research projects.
- An understanding of river catchment management and hydrology.
- An understanding of river catchment management and hydrology.
- Practical experience in managing beavers in captivity/as part of an organised trial programme
- Experience of presenting to the media.
- Formal training/qualification in project management (e.g. PRINCE2).



Credit: Eleanor Church

Terms & Conditions

Terms & Conditions

This is a full-time, fixed-term position for one year working 37.5 hours per week (five out of seven days each week, typically Monday to Friday from 9:00am to 5:00pm). The base of work will be Brooke House in Ashbocking the starting salary will be between £33,316.08 and £36,316.08 per annum depending on skills, knowledge and experience. This role is externally funded by the Ecological Restoration Fund via The Royal Society of Wildlife Trusts.

Employee Benefits

Annual leave entitlement starts at 33 days per annum (including Bank Holidays), increasing annually to 38 days, plus employees receive an additional day off for their birthday.

We offer a 9% employer pension contribution with no employee contribution required, free 24-hour Employee Assistance Programme, free life insurance from day one of employment, free access to a private GP for themselves and their household and discounts at high street retailers. Staff can also enjoy a 10% discount in our visitor centre cafes, including retail plus public engagement staff receive logo clothing.

Disability Confident Employer

We are a Disability Confident employer committed to making our recruitment processes & workplace culture inclusive & fair for all. Information can be provided in alternative & accessible formats on request to peopleandculture@suffolkwildlifetrust.org. We offer an interview to disabled applicants who meet the minimum criteria for the role and provide reasonable adjustments where needed during recruitment and in the workplace.



How to Apply

To apply for this opportunity, please submit an application via our website by 9:00am on Wednesday 12 June 2026.

The interviews are planned for 22 June 2026 at Brooke House.

If you would like an informal discussion about the role, you can email me on sam.hanks@suffolkwildlifetrust.org.

Thank you for your interest in bringing your talents, experience and skills to Suffolk Wildlife Trust. I look forward to receiving your application.

Sam Hanks
Head of Wilder Landscapes





Suffolk
Wildlife Trust



**Together, we can create a
wilder Suffolk for everyone**