



Suffolk
Wildlife Trust

Farm Wildlife Adviser



Worlingham Marshes

Credit: Jack Cripps

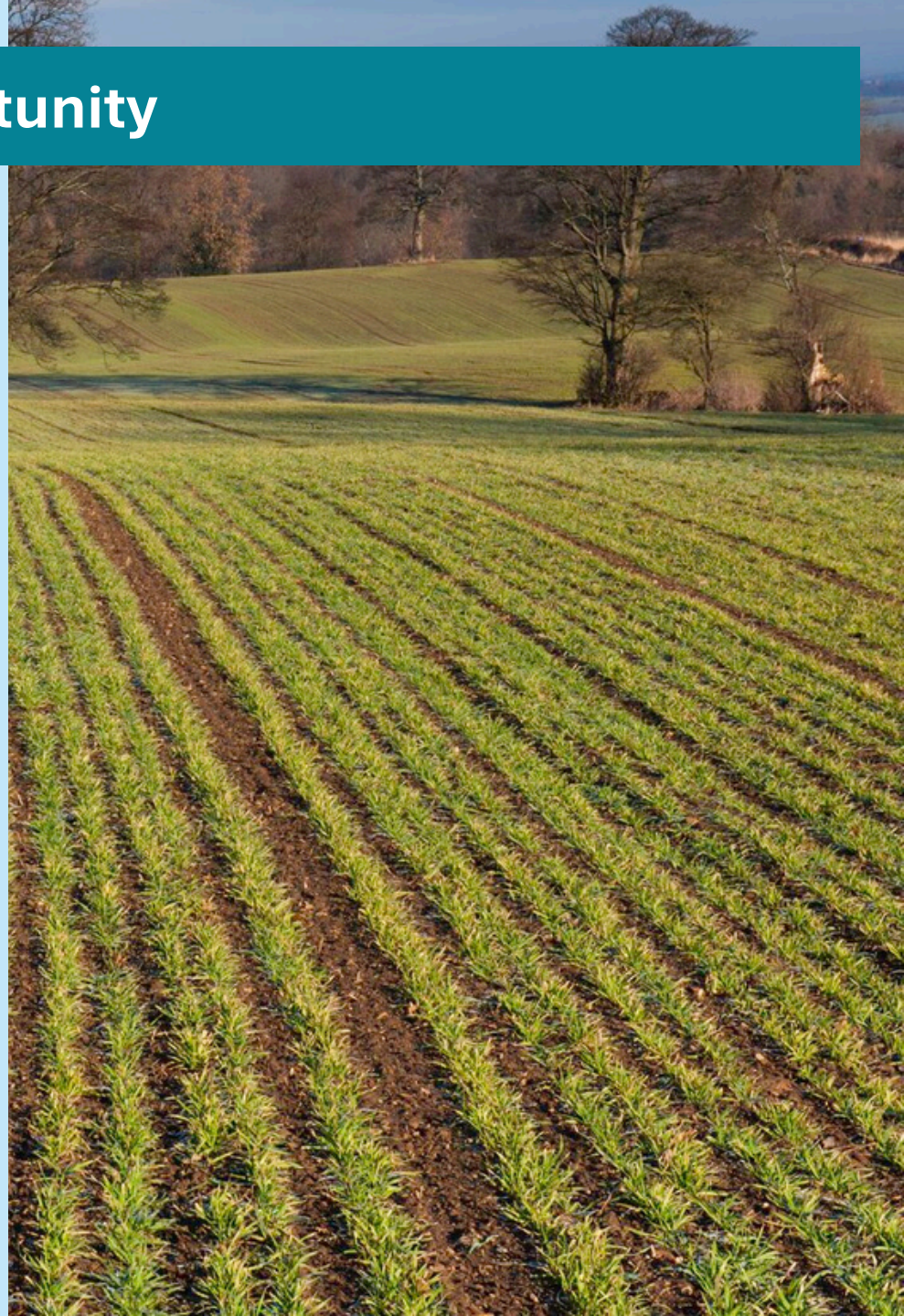
The Farm Wildlife Adviser Opportunity

This is an exciting opportunity for a suitably qualified and enthusiastic Farm Wildlife Adviser to join Suffolk Wildlife Trust's Wilder Landscapes Team at a pivotal time for nature recovery across Suffolk.

Our ambition is for 30% of Suffolk to be connected and well-managed for nature by 2030, helping wildlife recover and thrive while inspiring more people to take action for nature.

Working alongside the Senior Farm Adviser, you will provide high-quality wildlife advice to farmers and land managers across Suffolk, supporting practical conservation action and nature-friendly farming. You will help develop and maintain strong relationships within the farming community, supporting landscape-scale projects that benefit priority species and habitats.

The role will involve advising on habitat management, agri-environment schemes and funding opportunities, including Biodiversity Net Gain, Nature Recovery Networks and private investment projects. You will also help establish and support farmer clusters, deliver events and workshops, represent the Trust at stakeholder meetings, and promote our work through a variety of communication channels.



You will also contribute to the development of new advisory work, including Biodiversity Net Gain, Nature Recovery Networks, private investment opportunities and species mitigation projects that create benefits for both farmers and wildlife.

To succeed in this role, the post holder will have a strong understanding of farmland wildlife, habitat management and conservation, together with a good knowledge of the opportunities and challenges facing modern farming and land management. You will be a confident and credible communicator, able to build productive relationships with farmers, landowners, partners and other stakeholders, influencing and supporting them to take practical action for nature.

The successful candidate will be self-motivated, organised, good communicator and able to work independently while contributing effectively to a wider team. They will be passionate about nature recovery, enthusiastic about engaging with people and committed to helping deliver Suffolk Wildlife Trust's vision of creating a more connected, resilient and wildlife-rich landscape across the county.

This is an opportunity to make a lasting impact on nature recovery across Suffolk, working directly with the farming community to create healthier, more connected landscapes for wildlife. You'll join a passionate and dedicated team committed to delivering meaningful conservation outcomes and helping shape the future of nature-friendly farming across Suffolk.



Wilder Landscapes Team

The Wilder Landscapes Team is a key function of the Wildlife & Recovery Directorate at Suffolk Wildlife Trust with ambitious plans to bringing nature back to Suffolk. While the Trust's nature reserves play a vital role in protecting wildlife, nature recovery on the scale needed cannot be achieved through reserves alone. The Wilder Landscapes Team works beyond our reserve network, partnering with farmers, landowners, communities, businesses and local authorities to create larger, better connected landscapes where wildlife can thrive.

The Wilder Landscapes Team provides practical conservation advice and support across a wide range of habitats, helping to protect, enhance and restore land for nature. This includes working with farmers on wildlife-friendly land management, supporting County Wildlife Sites and Private Nature Reserves, improving rivers and wetlands, developing community-led conservation projects and identifying opportunities to create more joined-up habitats across Suffolk.

A key focus of the team is driving innovation in conservation through developing landscape-scale projects and securing investment through initiatives such as Biodiversity Net Gain, carbon markets and private finance.





Pond Restoration

About Suffolk Wildlife Trust

Suffolk Wildlife Trust is the county's nature charity, protecting and restoring Suffolk's wildlife.

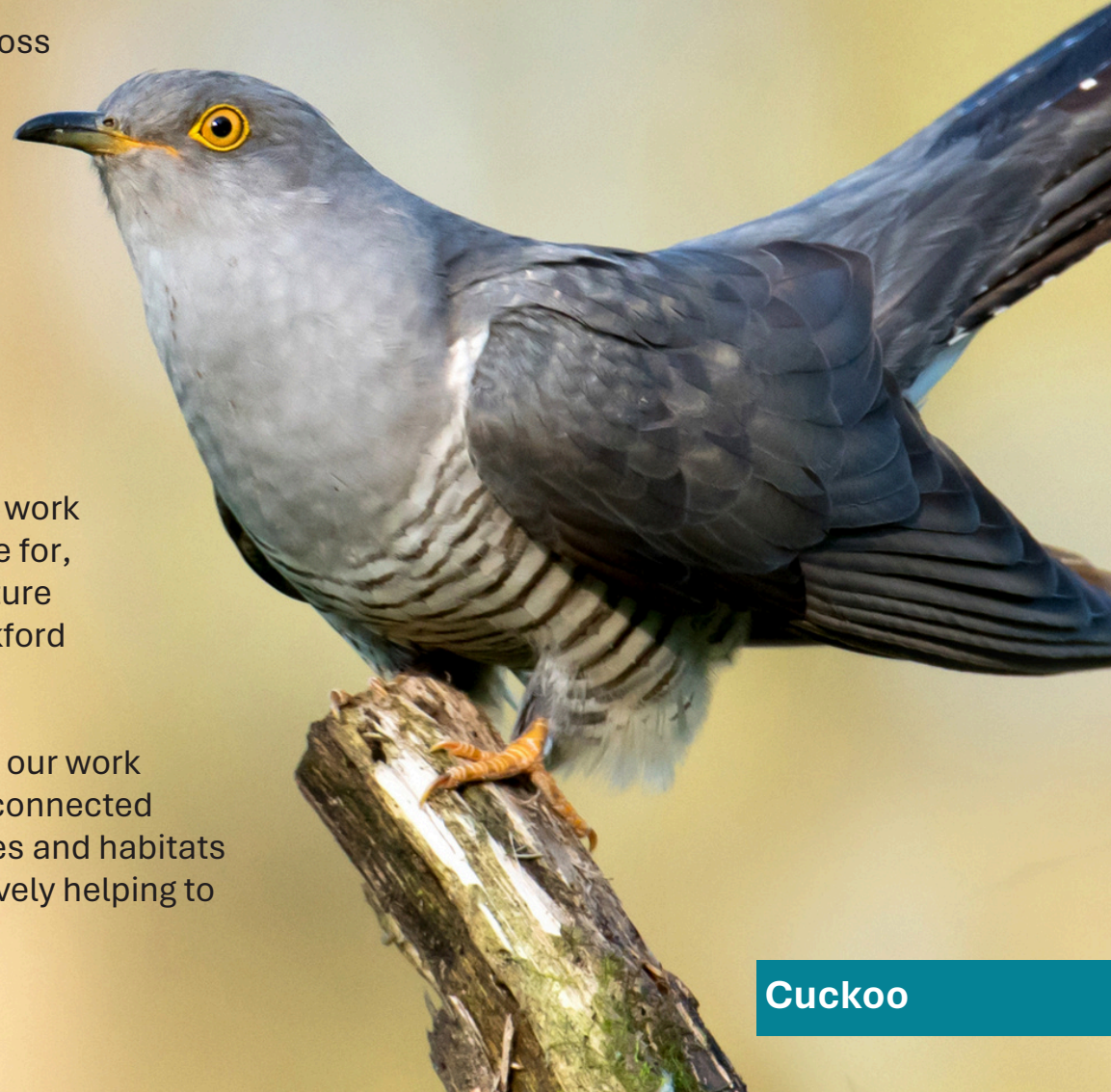
Founded in 1961, we have led conservation efforts across Suffolk for more than 60 years, safeguarding some of the county's most important wildlife areas as nature reserves.

Our Mission: Bringing Nature Back to Suffolk

Our Vision: A wilder Suffolk, where nature is thriving and abundant, because everyone is united in valuing nature and doing more to help.

As a grassroots organisation, we deliver our ambitious work by inspiring people & empowering communities to care for, and act for, nature. Alongside this, we manage 50+ nature reserves & two visitor centres (Carlton Marshes & Lackford Lakes) and we advocate for wildlife across the county.

In the decade to 2030, we are committed to scaling up our work across the county. Our aim is for 30% of Suffolk to be connected and well looked after for nature by 2030, so that species and habitats can recover and thrive, and for 1 in 4 people to be actively helping to achieve this.



Cuckoo

Suffolk Wildlife Trust is an organisation that makes a difference.



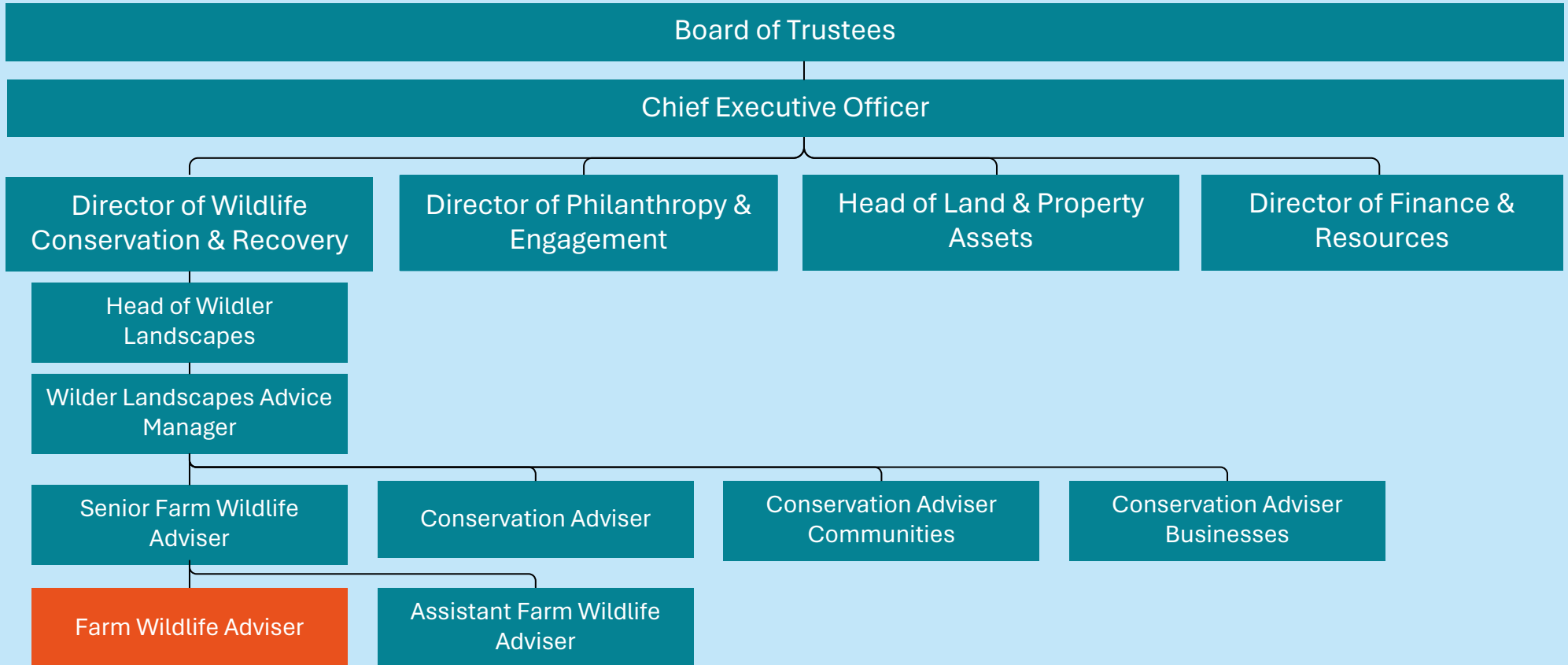
Suffolk
Wildlife Trust

We are a registered charity with a Board of Trustees, 1,300 volunteers & 28,000 members. We are part of The Wildlife Trusts – a UK federation of 46 local Wildlife Trusts through the UK that together has a powerful collective voice with over 850,000 members & caring for more than 2,300 nature reserves.



The
Wildlife
Trusts

We employ around 100 staff across 15 departments, organised within three main directorates. Each directorate is led by a Director, and each department has an Operational Lead who provides leadership for a key area of activity.



Our Beliefs, Values & Culture

At Suffolk Wildlife Trust, our organisational culture matters to us. It enables us to achieve more for wildlife and it shapes how we work together every day. Your job description explains the three key areas of focus for your role. What is equally important is how you do it. We are a gutsy organisation - we show courage, determination & spirit - learning from experience & embracing new ideas. We are driven by our shared beliefs, organisational values & passion to achieve more for nature and by supporting each other - staff & volunteers - to be the best we can to deliver for nature.

Our Beliefs Anchor Us

Everything we do, and how we do it, is anchored in our fundamental belief in the natural world.

We believe:

Nature has value in its own right.

We all share a responsibility for nature.

Society thrives when nature thrives.

Our Values Guide Us

Our values guide how we operate and the decisions we make, so we can achieve more for nature:

Tenacity: We lead by example and are gutsy in our ambition for nature and in how we use our voice.

Inclusion: We value and respect diverse voices & thinking to advocate and act for nature.

Pragmatism: We are impact-led in the methods, solutions and partnerships we choose to drive nature's recovery.

Our Culture Empowers Us

Our culture is how we work together, supporting each other, and empowering our county, to achieve more for nature:

Nature-led: We are driven by a shared passion for nature and support each other to be the best we can.

Collaborative: We communicate and collaborate brilliantly to amplify our impact and celebrate each other's achievements.

Trusting: Our staff and volunteers are trusted and accountable to deliver our ambition for nature.

Reflective: We are evidence-led, we challenge ourselves, and we embrace new ideas and learn from experience.

Safe: We always work safely and responsibly.

Role Description

Every role has three key areas of focus known as the “Power of 3” to support our mission, vision & strategic goals. Typically, you should expect to spend 80% of your time on the following:

1. Provide expert wildlife advice to Farmers & Land Managers

- Utilise your skills and experience to deliver high quality wildlife advice to farmers in Suffolk.
- Work with farmers and landowners, inspiring them to take action to help Suffolk’s wildlife either through existing or recommended management or via wilding approaches. Providing habitat management advice through site visits, reports, signposting.
- Setting up, developing, and supporting farmer and landowner clusters, encouraging long-term self-reliance whilst retaining our key advisory role.
- Develop expertise in specialist areas of farming, farm wildlife or wider ecology to the direct benefit of your work and to strengthen the team overall.
- Reporting successes internally to Farm Advice and Wilder Landscapes team, managers and members.



Dormouse

2. Identify and deliver funded projects on habitat enhancement and creation that deliver strategic objectives. Including agri environment schemes, other government grants, biodiversity net gain and private investment opportunities.

- Delivering investment in biodiversity on farmland to support our priority species and habitats, at the direction of the Senior Farm Adviser
- Working strategically with other team members and across the Trust to co-ordinate and connect our farmland advisory project work.
- Provide detailed agri-environment scheme advice, from scoping, application completion and delivery advice.
- Keep up to date with external funding opportunities, requirements via partnership working with NGOs and business.

3.) Expand influence on wildlife friendly farming to a wider audience of landowners, farmers stakeholders and public across Suffolk

- Deliver a range of relevant events for farmers and landowners, to widen our audience across Suffolk farmers and landowners and build our position as leading experts in the county.
- Reporting our work externally to the wider public through events, articles, social media and meetings.
- Represent the Trust at external stakeholder meetings.
- Be an ambassador for Suffolk Wildlife Trust.



Person Specification

Essential

- A personal commitment to Suffolk Wildlife Trust's mission to bring nature back.
- Good understanding of farmland wildlife, habitat management and the relationship between farming and biodiversity.
- Knowledge of UK conservation priorities, species and habitat conservation.
- Familiarity with agri-environment schemes and environmental land management.
- Excellent communication, interpersonal and networking skills, with the ability to engage and influence farmers, landowners and other stakeholders.
- Ability to build and maintain effective working relationships with a wide range of audiences.
- Strong organisational skills, with the ability to manage competing priorities and work independently.
- Competent IT user with experience of Microsoft 365, including Teams and SharePoint.
- Experience of delivering advice, guidance or support to landowners, farmers or other environmental stakeholders.
- Knowledge of safe lone-working practices and risk management.
- Self-motivated, proactive and solution-focused, with a practical approach to problem solving.
- Ability to represent Suffolk Wildlife Trust professionally and act as a positive ambassador for the organisation.
- Full UK driving licence and willingness to travel across Suffolk.

Desirable

- Degree or professional qualification in ecology, conservation, agriculture, environmental management or a related subject.
- Experience working within the conservation, ecological or agricultural sectors.
- Experience of providing farm advisory services.
- Practical experience of agri-environment scheme applications and delivery.
- Knowledge of Biodiversity Net Gain, Nature Recovery Networks and emerging environmental markets.
- GIS mapping skills.
- Ecological survey and monitoring experience.
- Experience of delivering events, workshops or farmer engagement activities.
- Experience of using social media and other channels to communicate conservation messages.



Barn Owl

Terms & Conditions

Terms & Conditions

This is a permanent, full-time position working 37.5 hours per week Monday to Friday from 9:00am to 5:00pm. The base of work will be Brooke House in Ashbocking and the starting salary will be between £30,815.52 to £33,815.52 depending on skills, knowledge and experience.

Employee Benefits

Annual leave entitlement starts at 33 days per annum (including Bank Holidays), increasing annually to 38 days, plus employees receive an additional day off for their birthday.

We offer a 9% employer pension contribution with no employee contribution required, free 24-hour Employee Assistance Programme, free life insurance from day one of employment, free access to a private GP for themselves and their household and discounts at high street retailers. Staff can also enjoy a 10% discount in our visitor centre cafes, including retail plus public engagement staff receive logo clothing.

Disability Confident Employer

We are a Disability Confident employer committed to making our recruitment processes & workplace culture inclusive & fair for all. Information can be provided in alternative & accessible formats on request to peopleandculture@suffolkwildlifetrust.org. We offer an interview to disabled applicants who meet the minimum criteria for the role and provide reasonable adjustments where needed during recruitment and in the workplace.



Black Cap

How to Apply

To apply for this opportunity, please submit an application via our website by 9:00am on Wednesday 22 July 2026.

The interviews are planned for Wednesday 05 August 2026.

If you would like an informal discussion about the role, you can email me on Helen.Bynum@suffolkwildlifetrust.org.

Thank you for your interest in bringing your talents, experience and skills to Suffolk Wildlife Trust. I look forward to receiving your application.

Helen Bynum
Senior Farm Wildlife Adviser



Hare



**Together, we can create a
wilder Suffolk for everyone**